

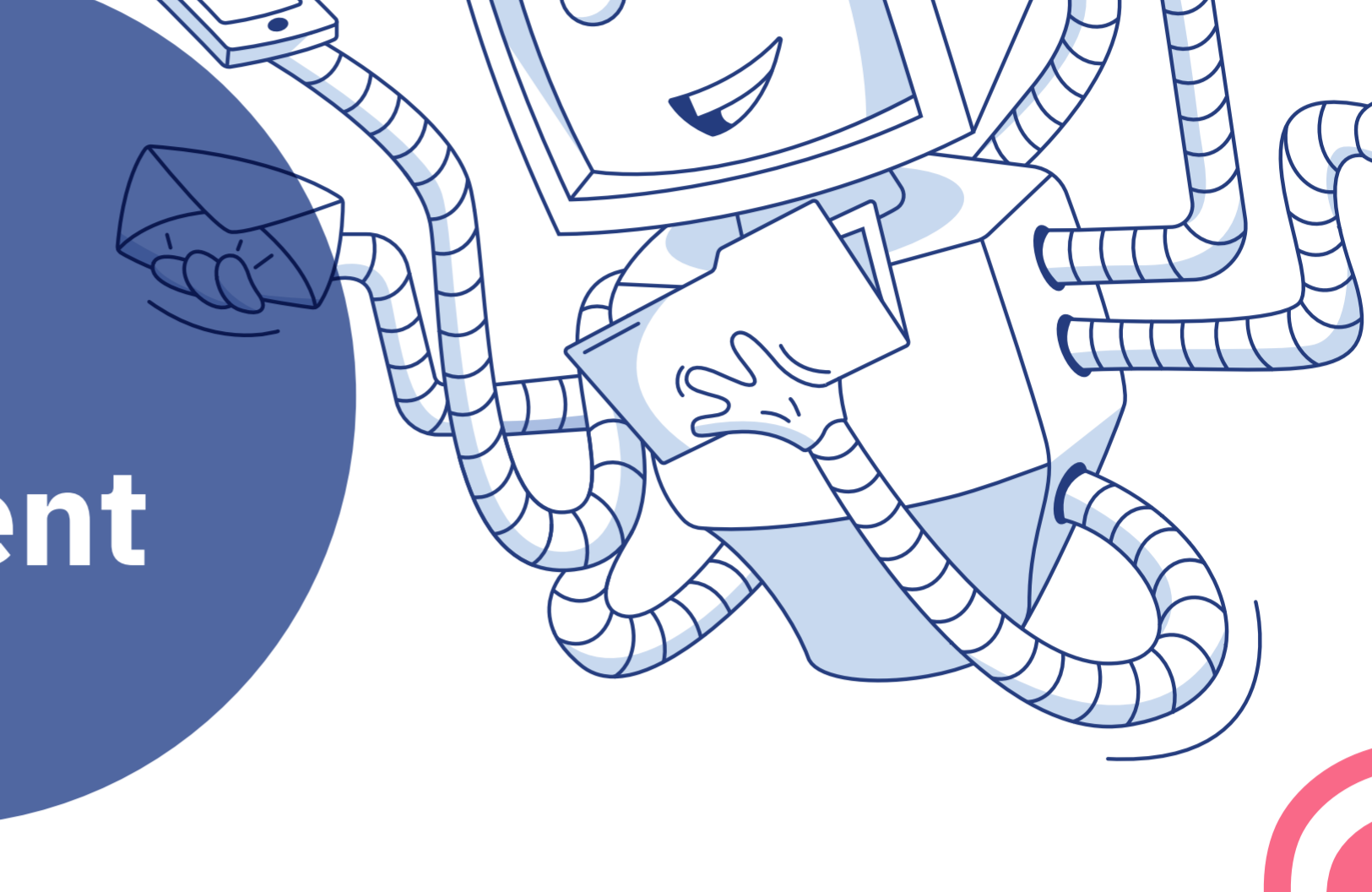
IBM CMC

by IBM Cognitive Systems

The IBM Cloud Management Console is a service hosted in the IBM cloud, enabling organizations to maintain and monitor their Power Systems infrastructure—all from a single location.

Access dynamic and prevalent views of your performance, inventory, patch levels, and logging data for your complete Power Systems enterprise—on or off premises—in order to make informed decisions to better manage environments and keep them running. CMC's cloud-native nature means no new software installation is required.

Manage Your Environment



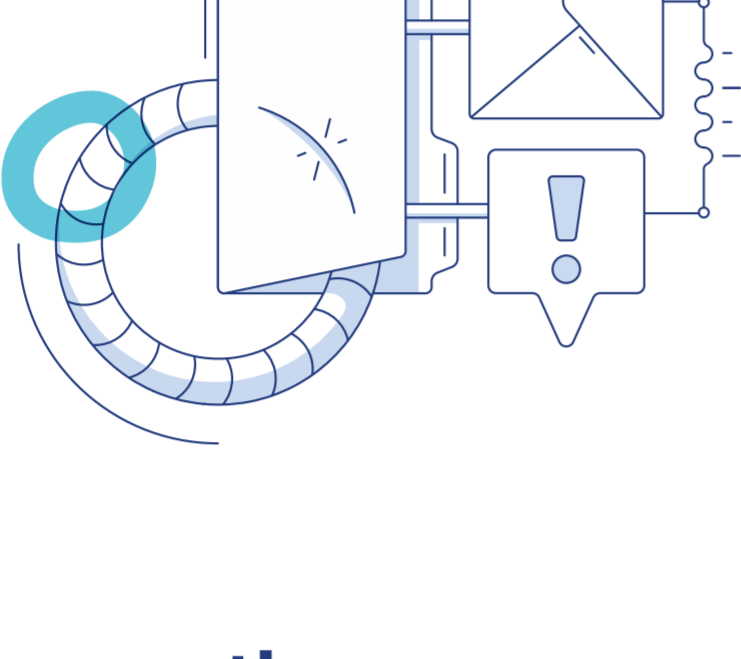
All your data in one place

CMC is your new one stop shop for everything related to your Power Systems environment. Our apps work together so you can be at your best, and with an aggregated HMC view you'll never be in the dark again.



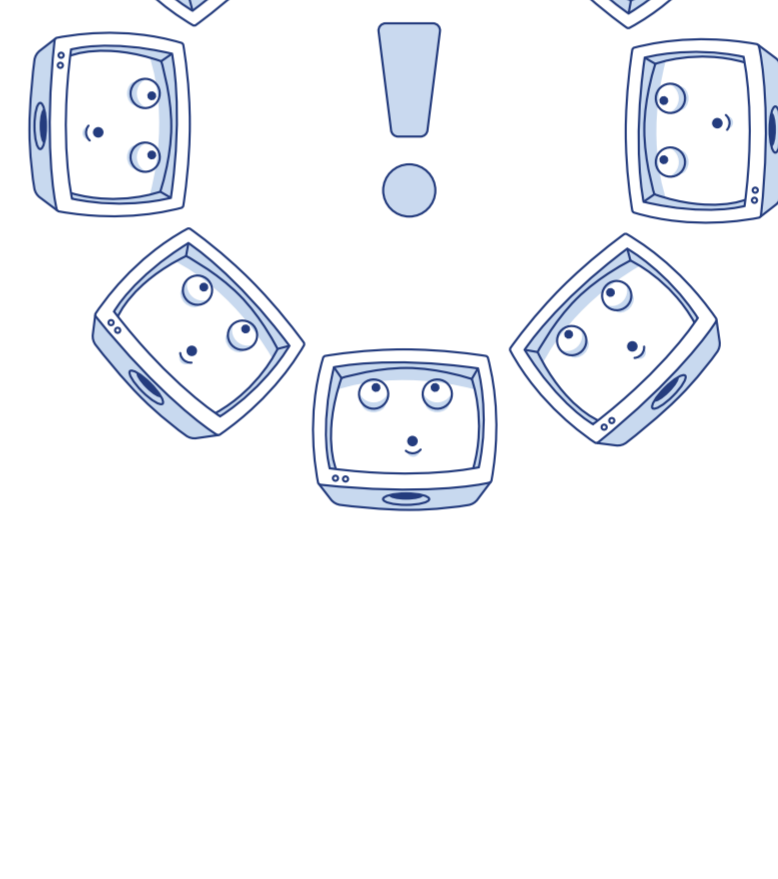
Customize your way

With perks like tagging and customizable notifications, define and organize your very own CMC experience.

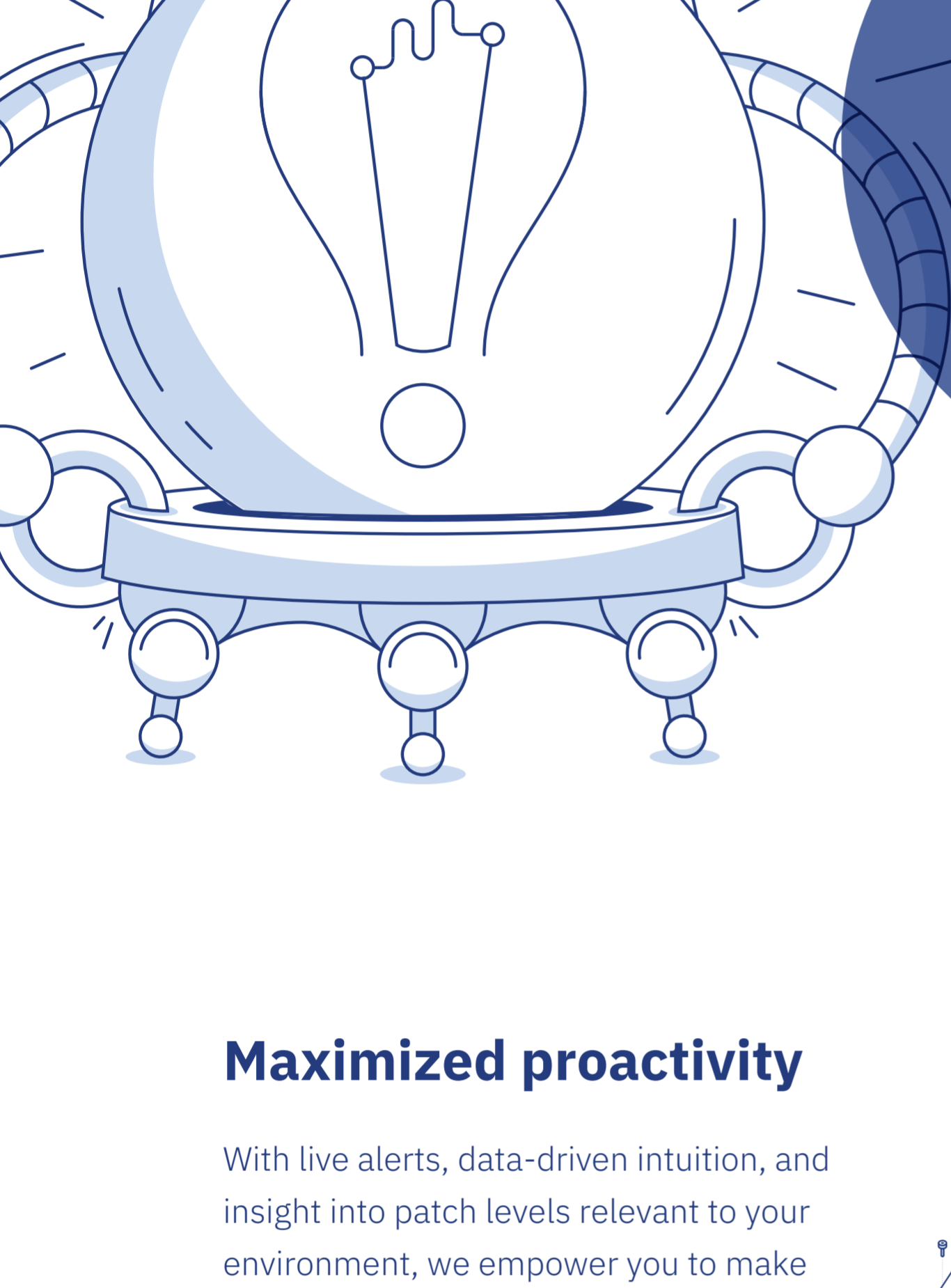


Stay on the same page

Communication is key when maintaining a stable and secure environment. With CMC, your entire team is able to stay on the same page by sharing data about future patching and related downtime windows, workload balancing, and more. Designed to easily gain alignment with your entire organization.



Actionable Insights



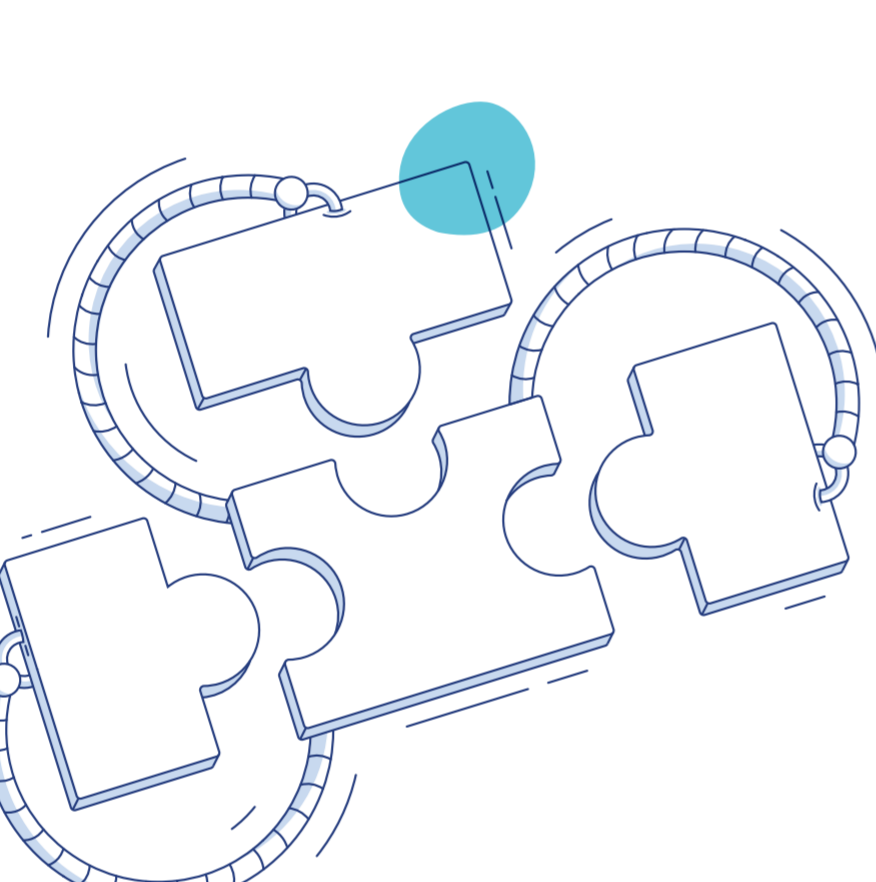
Maximized proactivity

With live alerts, data-driven intuition, and insight into patch levels relevant to your environment, we empower you to make your next move. It's all about knowing where to look, and what to do next.

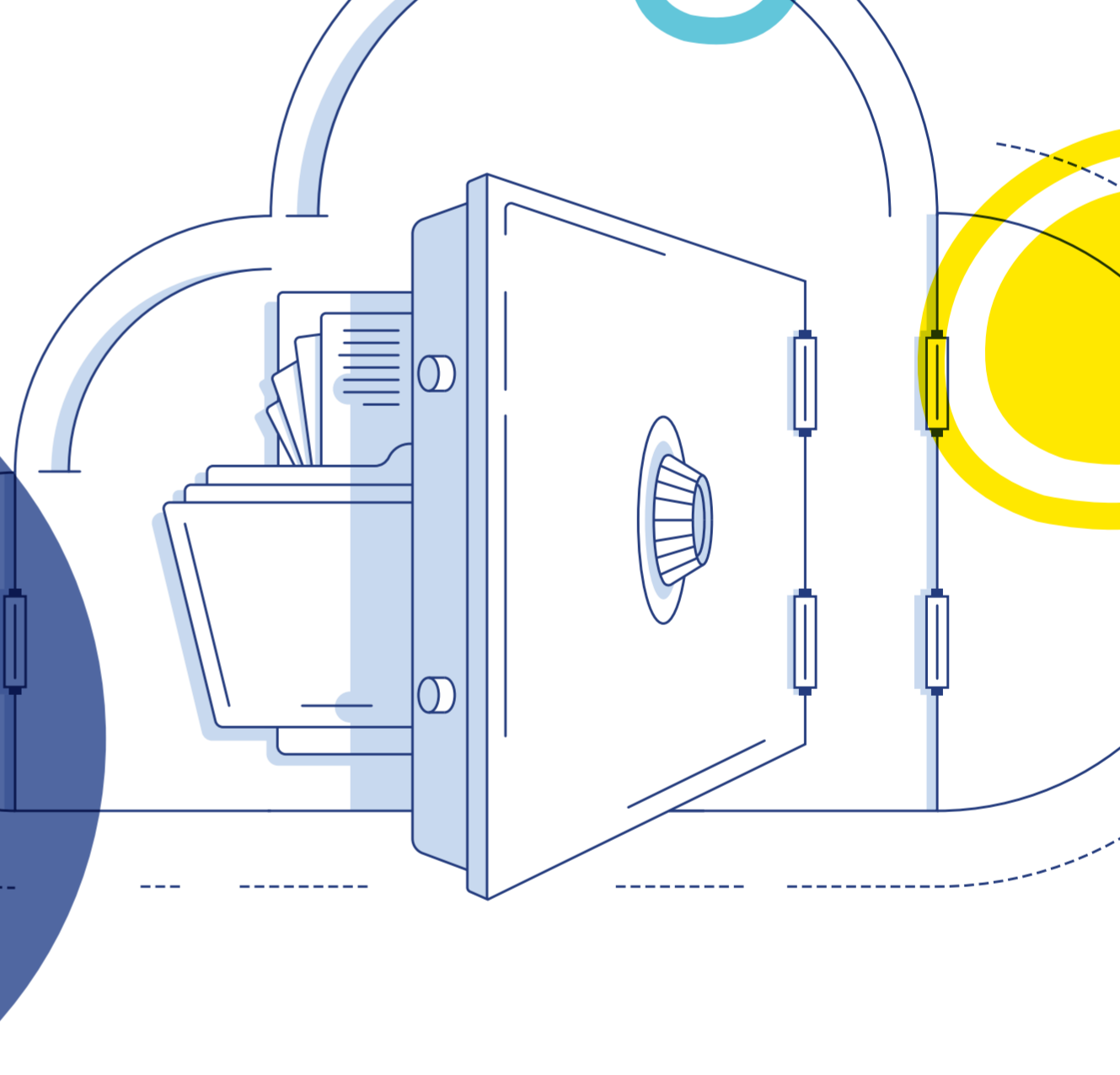


Tool integration

In the very near future, CMC will extend to work with existing communication channels so that you can continue using messaging systems you're comfortable with. With integrated messages, you can receive notifications in a number of different ways.

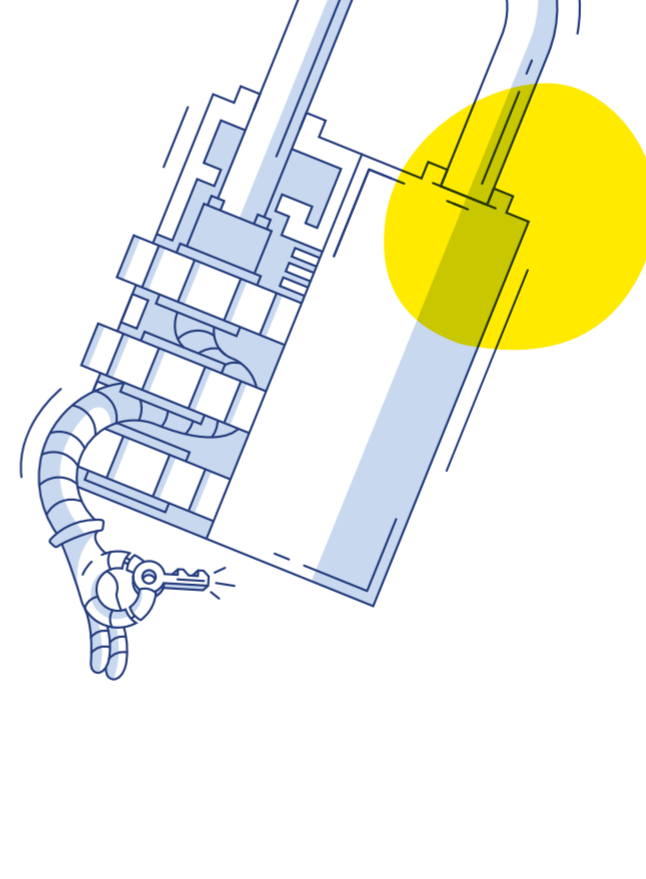


Secure Your Environment



You're in control

With CMC, you're in control. Whether you're a team of 5 or 50, you have the power to modify administrative rights and viewing access at any time. In addition, you can blacklist parts of your environment before sending anything to the cloud.



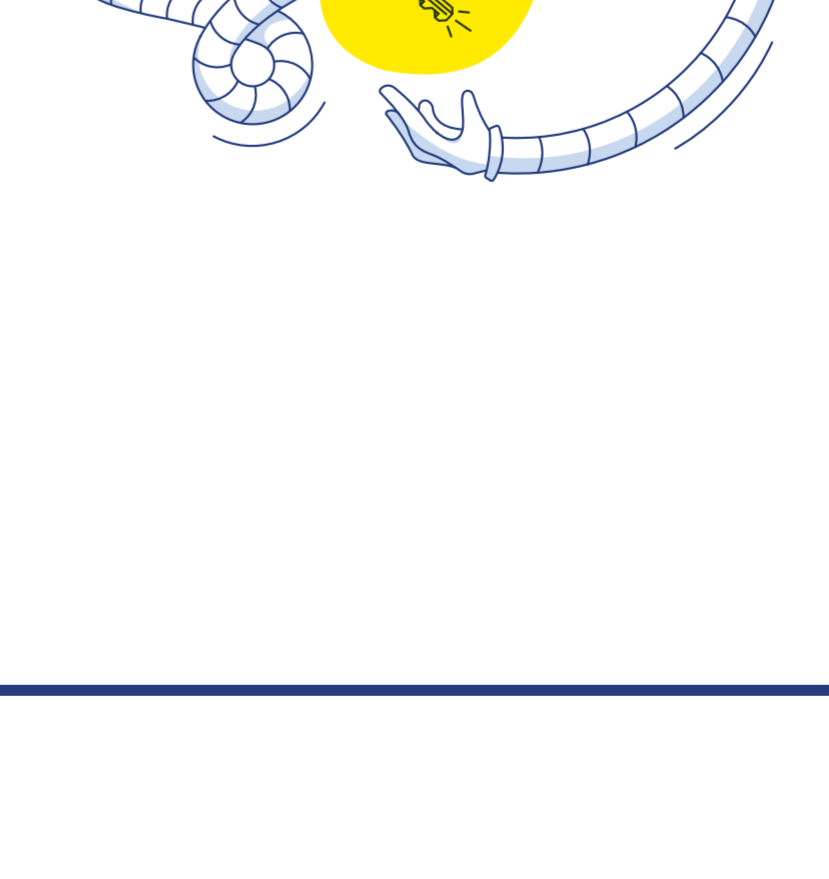
Your privacy matters

Security is extremely important in today's world—especially when it comes to cloud environments. To honor your data-privacy, IBM will not retain any of your data for machine learning. Known for its levels of security, all of your data will stay safely encrypted within the IBM Cloud.



Levels of data security

By virtue of being hosted in the IBM Cloud, CMC leverages a rich set of security services and teams supporting thousands of customers across over a hundred countries. Data in-motion and data at-rest, using a foundation of foundational security capabilities in the IBM Cloud, are always secure.



How to Get Started

See yourself in the cloud.

To learn more about the IBM Cloud Management Console on Power Systems, please contact your IBM representative or IBM Business Partner, or visit the following website:

<https://www-03.ibm.com/systems/power/software/cloud-management-console/>

[Learn More](#)



© Copyright IBM Corporation 2018

Produced in the United States of America
February 2018

IBM, the IBM logo, ibm.com, and Power Systems are trademarks of International Business Machines Corp., registered in many jurisdictions worldwide. Other product and service names might be trademarks of IBM or other companies. A current list of IBM trademarks is available on the web at "Copyright and trademark information" at ibm.com/legal/copytrade.shtml

The content in this document is current as of the initial date of publication and may be changed by IBM at any time.

THE INFORMATION IN THIS DOCUMENT IS PROVIDED "AS IS" WITHOUT ANY WARRANTY, EXPRESS OR IMPLIED, INCLUDING WITHOUT ANY WARRANTIES OF MERCHANTABILITY, FITNESS FOR A PARTICULAR PURPOSE AND ANY WARRANTY OR CONDITION OF NON-INFRINGEMENT. IBM products are warranted according to the terms and conditions of the agreements under which they are provided.