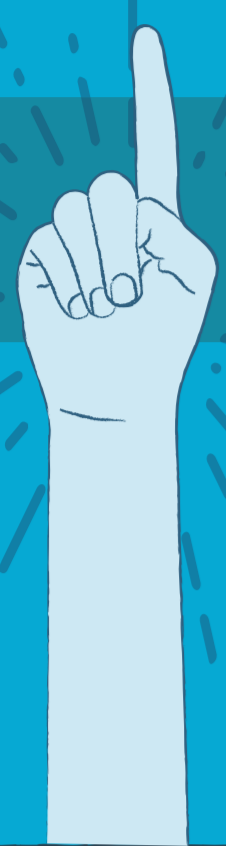




5 SURPRISING FACTS ABOUT HYPERCONVERGENCE

Hyperconverged infrastructure (HCI) is touted as “THE NEXT BIG THING” in virtualization, but what does that really mean? Read on to learn five facts you might not know about hyperconvergence—and why it might make a lot of sense for your organization.



THE “HYPER” IS MORE THAN HYPE

These days, it seems like everyone has jumped on the HCI bandwagon. However, the term “hyperconverged” has a very specific meaning:

HYPER- |'hīpər|

1. Shortened form of hypervisor

CONVERGED |kən'vərjd|

1. Combined server and storage technology



Many converged infrastructure vendors like to say they offer an HCI solution, while still relying on separate, third-party hypervisors.

DON'T BE FOOLED BY THESE PRETENDERS...



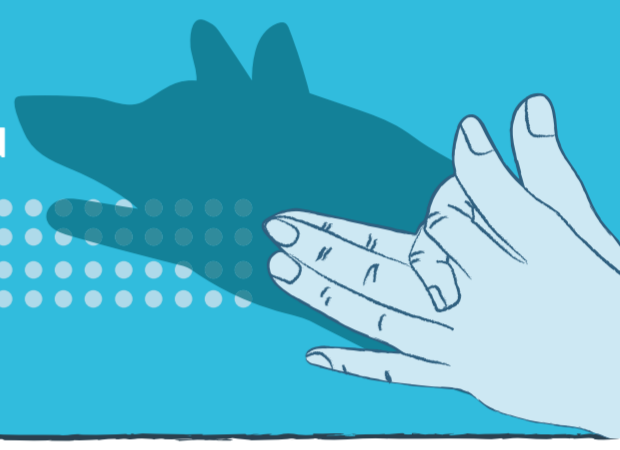
EFFICIENCY COUNTS

INEFFICIENCY - LESS VMS

For example, some HCI vendors use virtual storage appliance (VSA) models that **consume huge amounts of RAM and CPU** (leaving less room for application VMs).

One HCI vendor reserves **>100 GB of RAM per node, just for storage I/O overhead**

● = 1 GB



A BETTER APPROACH? An entirely new storage architecture designed just for HCI. Vendors use this model to deliver storage efficiently to the hypervisor—resulting in overall hardware efficiency for you.



TRUE HCI IMPROVES DATA PROTECTION

THE SIMPLE FACT: More data protection vendors = More opportunity for data loss

But since HCI solutions often include comprehensive backup, replication, and disaster recovery tools, they provide a single source for data protection—**AND LESS NEED TO WORRY ABOUT DATA LOSS.**



MORE MONEY IN YOUR POCKET

Yes, the cost of acquisition can be high with HCI solutions, but the operational savings make it completely worth it. **This includes:**

ENORMOUS SAVINGS on implementation and scaling costs, since the traditional integration work (i.e., the convergence) has already been done for you

LOWER MANAGEMENT/MAINTENANCE COSTS over the lifecycle of the solution



The ROI of an HCI solution is usually much more favorable than with a traditional server + SAN + hypervisor solution.



SCALE CAPACITY, ANYTIME

Some vendors let you customize each appliance in an HCI cluster. For example, when you add a new node, you can increase the storage capacity.

You also have the flexibility to adjust the RAM or CPU to meet your needs.

RAM



CPU



THE RIGHT SOLUTION RIGHT NOW

SCALE COMPUTING TAKES THE MYSTERY OUT OF HYPERCONVERGENCE. Our HC3 virtualization platform combines servers, storage, virtualization, and backup/disaster recovery into a single solution. You get simplicity, availability and scalability at a fraction of the cost of traditional infrastructure.

READY TO SEE IT IN ACTION?

VIEW A LIVE DEMO

