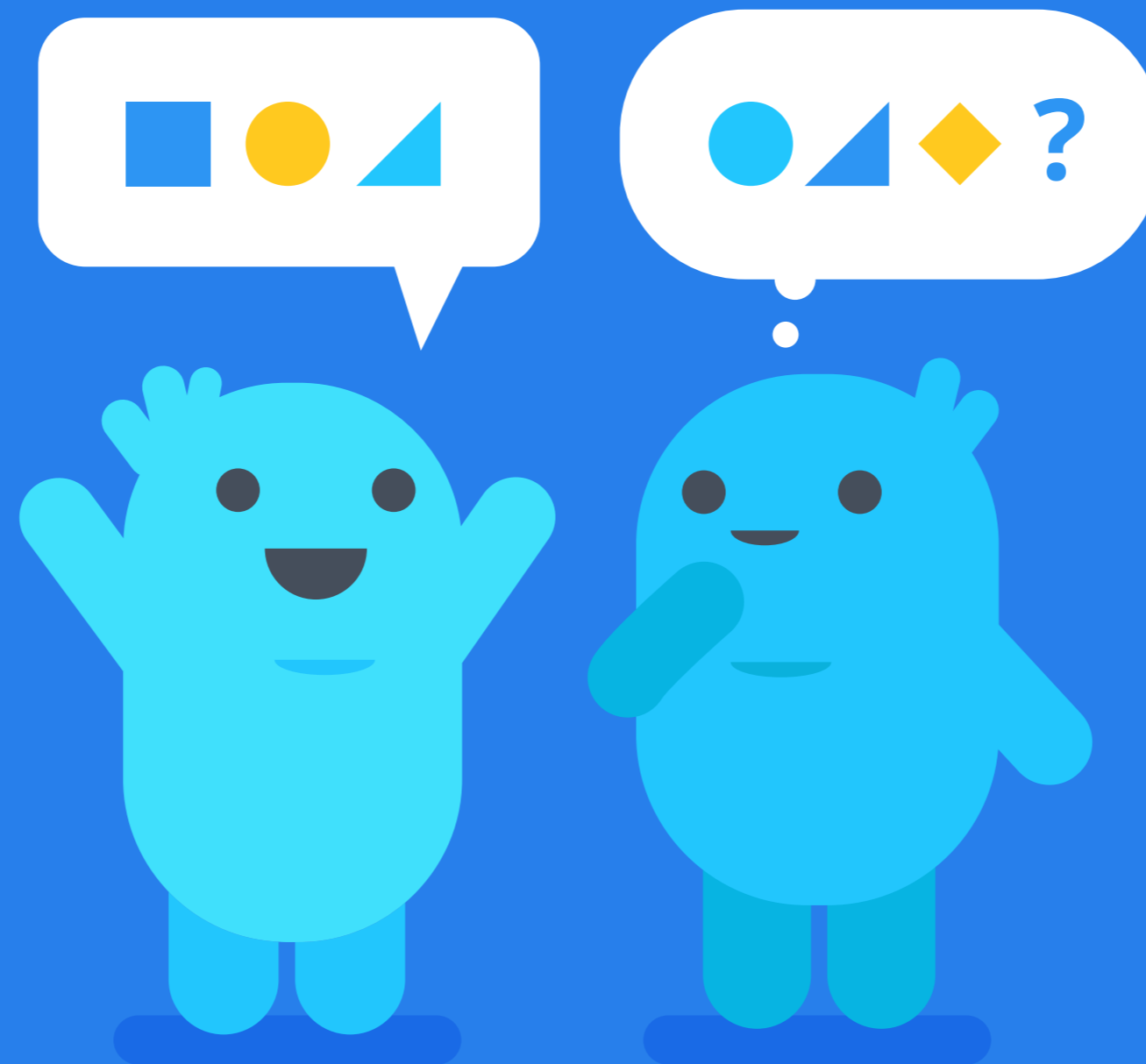




RAISE THE BAR

We do things the right way, for the right reasons. We have a commitment to excellence and are constantly raising the bar.



LEAD WITH HUMILITY

We have confidence without attitude. We have strong convictions but readily change our view when presented with compelling arguments or data. Once a decision is made, we commit and rally around it.



BE A SCIENTIST

We value a scientific and data-centric approach to problem solving. We believe the path to improvement is through rapid testing of our hypotheses.



BE INCLUSIVE

We believe that our best work emerges from diverse voices. We're committed to building an inclusive workplace where individuals of all backgrounds are valued and empowered to contribute to our mission.



ALWAYS BE IMPROVING

We believe in a culture of continuous learning, improvement, and feedback.



TAKE THE KEYS

We take ownership of our work and responsibility for its outcomes. We are resourceful, resilient, and have the courage to tackle big challenges.