

└ spacetype
foundry

2021

Garet

Type
specimen

About

Garet is a modern geometric sans serif.

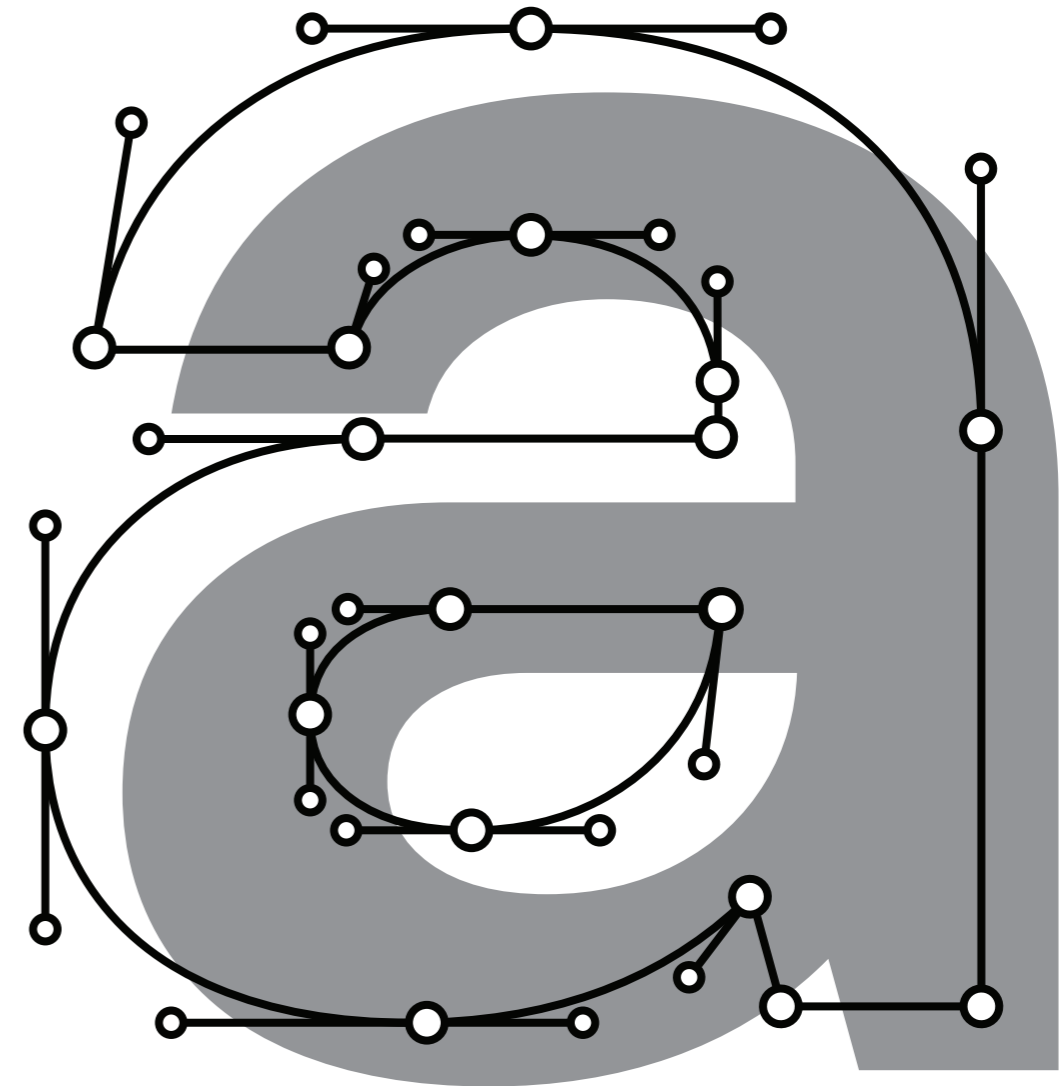
It is characterised by high x-height, clean and soft letterforms with a smooth masculine tone. Garet derives its distinctive oval shapes from the optically perfect circle and has closed counters to further emphasise that form.

The Garet type family consists of 11 weights ranging from quite thin to extremely fat and their corresponding Italics to make a total of 22 fonts. And all of them are combined into one variable font that will give you unlimited opportunities to explore and express without the restrictions of the predefined weights.

We understand the need for more extensive language support. That's why the typeface includes Extended Latin and Cyrillic and covers more than 200 languages.

Garet also comes with several alternative stylistic sets that will change the overall look of a paragraph, giving it a slightly different appearance. In addition to that, the type family is enriched with an extensive list of OpenType features for advanced typographic layout, including standard and discretionary ligatures, tabular and small figures, fractions, language localizations, case sensitive punctuation, and more.

The wide variety of weights, characters, and additional features allows Garet to be implemented equally well both in print and on-screen media.



reinterpolate
reinterpolate
reinterpolate
reinterpolate

All 22 weights in one variable font

50 _____ Garet Hairline & *Italic*

100 _____ Garet Thin & *Italic*

200 _____ Garet Light & *Italic*

300 _____ Garet Book & *Italic*

400 _____ Garet Regular & *Italic*

500 _____ Garet Medium & *Italic*

700 _____ **Garet Bold & *Italic***

800 _____ **Garet Extra Bold & *Italic***

850 _____ **Garet Heavy & *Italic***

900 _____ **Garet Black & *Italic***

950 _____ **Garet Fat & *Italic***

Latin glyph case

A Á Ă Ǻ Â Ä À Ā Ą Ą ã Æ É B C Ć Ć Ç Ĉ Ċ D Đ Ď Ę E É Ě Ě Ê Ë È Ē
 Ę F G Ğ Ğ Ġ Ġ Ģ Ĥ Ħ Ĩ Ī Ĵ ĵ Ķ ĸ Ĺ ĺ Ľ ĺ Ł M N Ń Ń Ņ ņ Ň
 Ő Ó Ő Ő Ò Ő Ő Ø Ø Ő Œ P p Q R Ŕ Ŕ Ŗ Ŗ Ś Ś Ś Ŝ Ŝ Š š ß Æ T t Ŧ Ŧ Ŧ
 U Ú Ů Ů Ū Ū Ŭ Ŭ Ů Ů Ű Ű ű ű Ų Ų ų ų Ŵ Ŵ Ŷ Ŷ Ÿ Ÿ Ź Ź Ź

a á ă ǻ â ä à ā ą ą ã æ æ b c ć ć ç ç ĉ ċ d đ ě ě ê ë è ē ę ę
 ę ę ġ ġ ģ ģ ĥ ĥ ħ ħ ĩ ĩ ĵ ĵ ĵ ĵ ĵ ĵ ĵ ĵ ĵ ĵ ĵ ĵ ĵ ĵ ĵ ĵ ĵ ĵ
 ò ó ő ő ò ó ø ø ő œ p p q r ŕ ŕ ŕ s ś ś ŝ ŝ š š ß t t t t t u ú ů ů ū ū ŭ ŭ ű ű Ų Ų ų ų Ŵ Ŵ Ŷ Ŷ Ÿ Ÿ Ź Ź Ź

Cyrillic glyph case

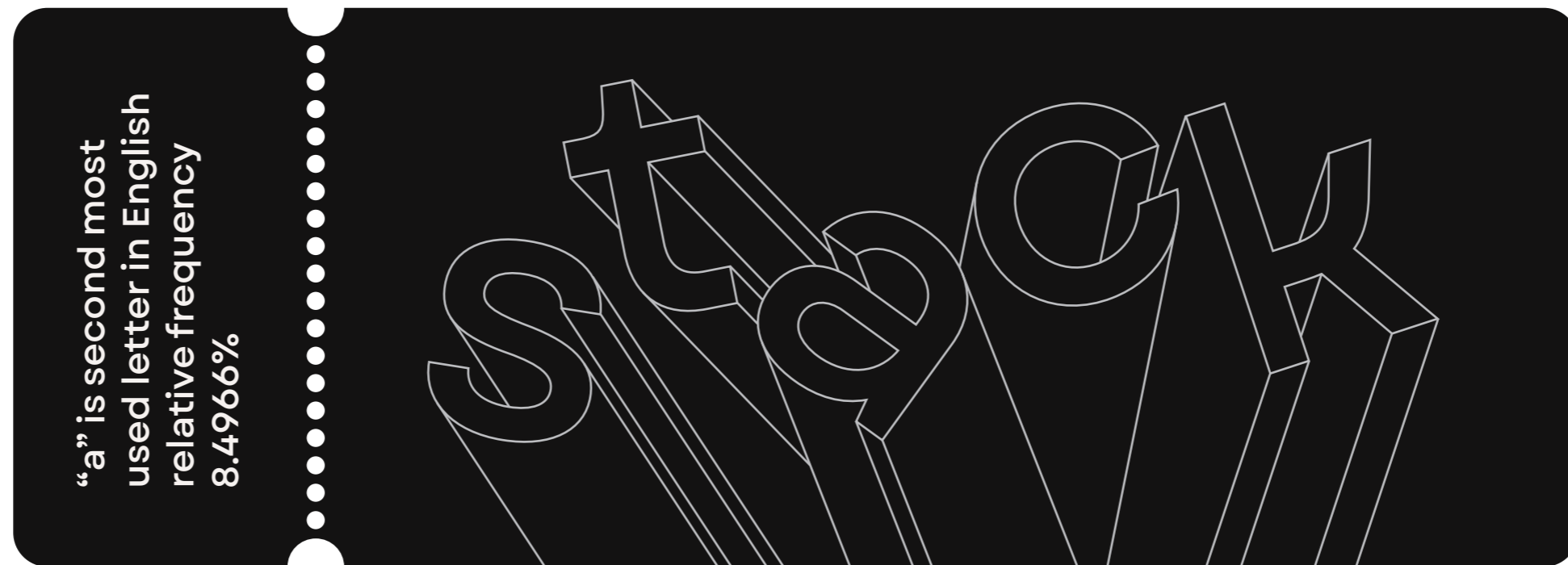
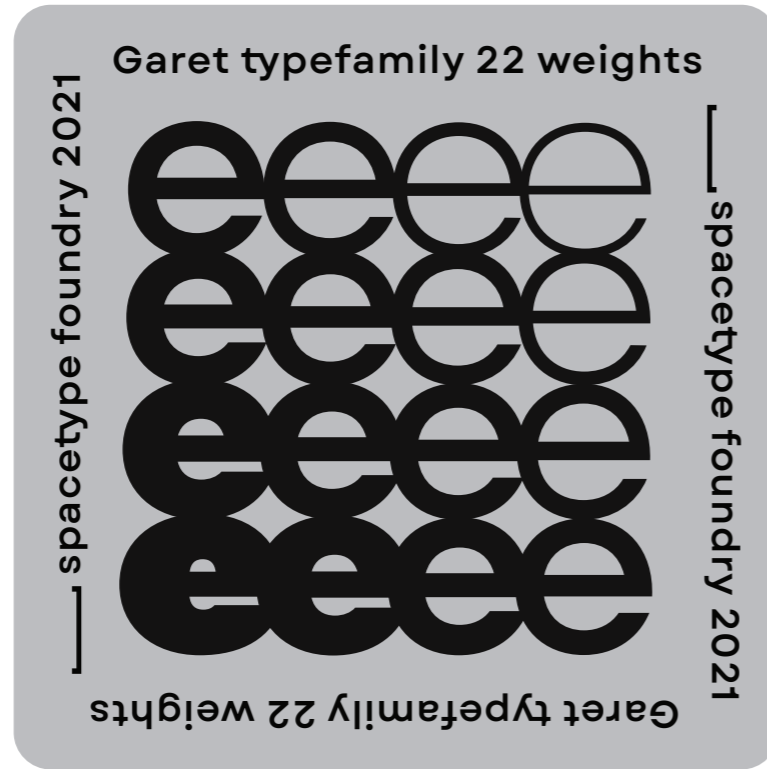
АБВГГГДДЕÈËЖЗИЙЙКЌЛМН
ОПРСТУЎФФХЧЦШЩЦЬЫЪЛЬ
ЪSЄЭІІЈЋЮЯЋÆ

абввггггддеèëжжззиййиу̀к
ќклмноппрсттуўфхчццшшщ
щццььыыьъльъsєэііјћююяћæ

Numbers glyph case

0123456789 0 1 2 3 4 5 6 7 8 9 10
① ② ③ ④ ⑤ ⑦ ⑧ ⑨ ⑩ 0123456789
0123456789 0123456789 0123456789 0123456789

Nautilidae shell?
Barcelona 14 km
something more
stormy night
the geometrical



{motorveien er}
1498 översättare
A zászlóshajó **⌘**
holzscheibe aus
stegte vinger?

Open Type

define standart
ligatures

discretionary
ligatures **typeface**

change stylistic
alternates

about ³/₄ fractions,
superiors and inferiors

tabular
lining **107 points**

case sensitive
punctuation **my {Name}**

small
figures **C¹² block**

Stylistic alternates

ΚΚ, QϞ

áǎâäàāąǎãææęǧǧǧǧκκκβυύÿÿ

↓

ΚΚ, QϞ

áǎâäàāąǎãææęǧǧǧǧκκκβυύÿÿ

ЖЙКК'У

ажйкк'уÿæ

↓

ЖЙКК'У

ажйкк'уÿæ

Tabular
Figures

0 1 2 3

4 5 6 7 8 9

€ ¢ \$

«ретро музыка»
Декоративный?
рассеивание
30 Май 1672 год
Морской берег!

железничар ъѣ
братя Прошек
улица 4 Август
върволица от
старт 12мин ѱ

Milano

One of the “Four Motors for Europe”

Milan, Milanese this, Milano is a city in northern Italy, capital of Lombardy, and the second-most populous city in Italy after Rome. Milan served as the capital of the Western Roman Empire, the Duchy of Milan and the Kingdom of Lombardy–Venetia. The city proper has a population of about 1.4 million while its metropolitan city has **3.26 million inhabitants**. Its continuously built-up urban area, that stretches well beyond the boundaries of the administrative metropolitan city, is the fourth largest in the EU with **5.27 million inhabitants**. The population within the wider Milan metropolitan area, also known as Greater Milan, is estimated at 8.2 million, making it by far the largest metropolitan area in Italy and the **3rd largest in the EU**.

Milan is considered a leading alpha global city, with strengths in the fields of art, commerce, design, education, entertainment, fashion, finance, healthcare, media, services, research and tourism. Its business district hosts Italy's stock exchange.

National Football League

1920

The National Football League is a professional American football league consisting of 32 teams, divided equally between the National Football Conference and the American Football Conference. The NFL is one of the four major North American professional sports leagues, the highest professional level of American football in the world,[3] the wealthiest professional sport league by revenue, and the sport league with the most valuable teams.

The NFL's 17-week regular season runs from early September to late December, with each team playing 16 games and having one bye week. Following the conclusion of the regular season, seven teams from each conference (four division winners and three wild card teams) advance to the playoffs, a single-elimination tournament culminating in the Super Bowl, which is usually held on the first Sunday in February and is played between the champions of the NFC and AFC. The league is headquartered in New York City.

Sverige

För Sverige – I tiden

Sverige: benämns formellt Konungariket Sverige är ett nordiskt land på Skandinaviska halvön i Nordeuropa. Sverige har landgräns i väst med Norge, i nordost med Finland samt angränsande territorialvatten till Norge i västsydväst, Danmark i sydväst och Finland i öst. Landet har kuster mot Bottenviken, Bottenhavet, Ålands hav, Östersjön, Öresund, Kattegatt och Skagerrak.

Sverige har en befolkning på 10,4 miljoner invånare och är med en landareal på 407 283,53 km², 528 860,80 km² inkl allt vatten och hav, det geografiskt femte största landet i Europa.

Huvudstad är Stockholm, landets största stad med 1,4 miljoner invånare. Därutöver finns ytterligare tre storstäder enligt Statistiska centralbyråns definition om fler än 200 000 invånare: Göteborg, Malmö och Uppsala. Omkring 87 procent av befolkningen, en ökande andel, lever i tätorter med minst 200 invånare. Med OECD-definitionen – utgående från minst 50 000 invånare – bor bara 41 procent av svenskarna i urbana system. Sverige är alltså ett utpräglat landsbygdsland, med låg befolkningstäthet om 22 invånare per km² och



Eszett

Er wird als Eszett oder scharfes S bezeichnet, umgangssprachlich auch als „Doppel-S“ (in diesem Sinn nur vereinzelt in der Schweiz), „Buckel-S“, „Rucksack-S“, „Dreierles-S“ oder manchmal auch missverständlicherweise als „Ringel-S“, dies bezeichnet jedoch üblicherweise eine andere S-Variante.

Höhenpark Killesberg

Der Höhenpark Killesberg ist ein rund 50 Hektar großer Park im Stadtbezirk Stuttgart-Nord der Landeshauptstadt. Er ist Bestandteil des Grünen U und grenzt im Osten an den Wartberg und im Süden an den Park an der Roten Wand an. Seit 2012 ist auch die Grüne Fuge auf den Flächen der ehemaligen Messe Bestandteil des Höhenparks. Die Anlage geht auf die Maßnahmen zur Reichsgartenschau 1939 zurück. Dafür war ein ursprünglich als Steinbruch genutztes, aber bereits aufgelassenes Gelände nach Plänen des Landschaftsarchitekten Hermann Mattern zum Park und Ausstellungsgelände umgestaltet worden.

1941 bis 1942 war das Gelände Sammlungsort jüdischer Bürger aus Württemberg und Hohenzollern für die Transporte in die Konzentrations- und Vernichtungslager. Ein steinernes Mahnmal erinnert an die mehr als 2000 jüdischen Mitbürger, „die während der Zeit des Unheils in den Jahren 1941 und 1942 von hier aus

Пловдив

Пловдив е вторият по големина град в България с население 347 851 души по настоящ адрес (към 31.12.2019 г.). Намира се в западната част на Горнотракийската низина, на двете бряга на река Марица. Отстои на 15 km северно от Родопите и на 50 km южно от Стара планина. Градът е застроен в подножията на шест сиенитни хълма, поради което често е наричан „Градът под тепетата“. Пловдив е управленски център на област Пловдив, община Пловдив, община Марица, община Родопи и е най-голямото стопанско ядро на Южния централен район.

Пловдив е град на над 8000 години, чието минало може да се проследи от праисторията до наши дни. Първите неолитни поселения в границите на днешния град започват от VI хилядолетие пр.н.е.[2][3], а от каменно-медната епоха (IV-III хилядолетие пр.н.е.) животът в града не е прекъсвал, което го нарежда сред най-древните постоянно обитавани градове в света.[4][5][6][7] Запазени и консервирани са древни паметници като античния театър, римския огеон, агората (римския форум), римския стадион, късноантична сграда „Ейрене“, епископската базилика, малката базилика и гроби.

Чёрное море

Чёрное море – внутреннее море бассейна Атлантического океана. Проливом Босфор соединяется с Мраморным морем, далее, через пролив Дарданеллы с Эгейским и Средиземным морями. Керченским проливом соединяется с Азовским морем. С севера в море глубоко врезается Крымский полуостров. По поверхности Чёрного моря проходит водная граница между Европой и Азией.

Площадь Чёрного моря – 422 000 км². Очертания Чёрного моря напоминают овал с наибольшей осью около 1150 км. Наибольшая протяжённость моря с севера на юг – 580 км. Наибольшая глубина – 2210 м[1], средняя – 1240 м. Объём воды в море составляет 555 тыс. км³. Характерной особенностью Чёрного моря является полное (за исключением ряда анаэробных бактерий) отсутствие жизни на глубинах более 150–200 м из-за насыщенности глубинных слоёв воды

1147 MOSCOW

Moscow Russian: Москва, tr. Moskva, IPA: is the capital and largest city of Russia. The city stands on the Moskva River in Central Russia, with a population estimated at 12.4 million residents within the city limits, while over 17 million residents in the urban area, and over 20 million residents in the Moscow Metropolitan Area. The city covers an area of 2,511 square kilometres (970 sq mi), while the urban area covers 5,891 square kilometres (2,275 sq mi),[14] and the metropolitan area covers over 26,000 square kilometres (10,000 sq mi). Moscow is among the world's largest cities, being the largest city entirely in Europe, the largest urban area in Europe, the largest metropolitan area in Europe, and the largest city by land area on the European continent.



Experience more at
garet.spacetype.co

Buy Garet family
www.myfonts.com

If you have any further questions contact us at
contact@spacetype.co